

FABRICS CATALOGUE

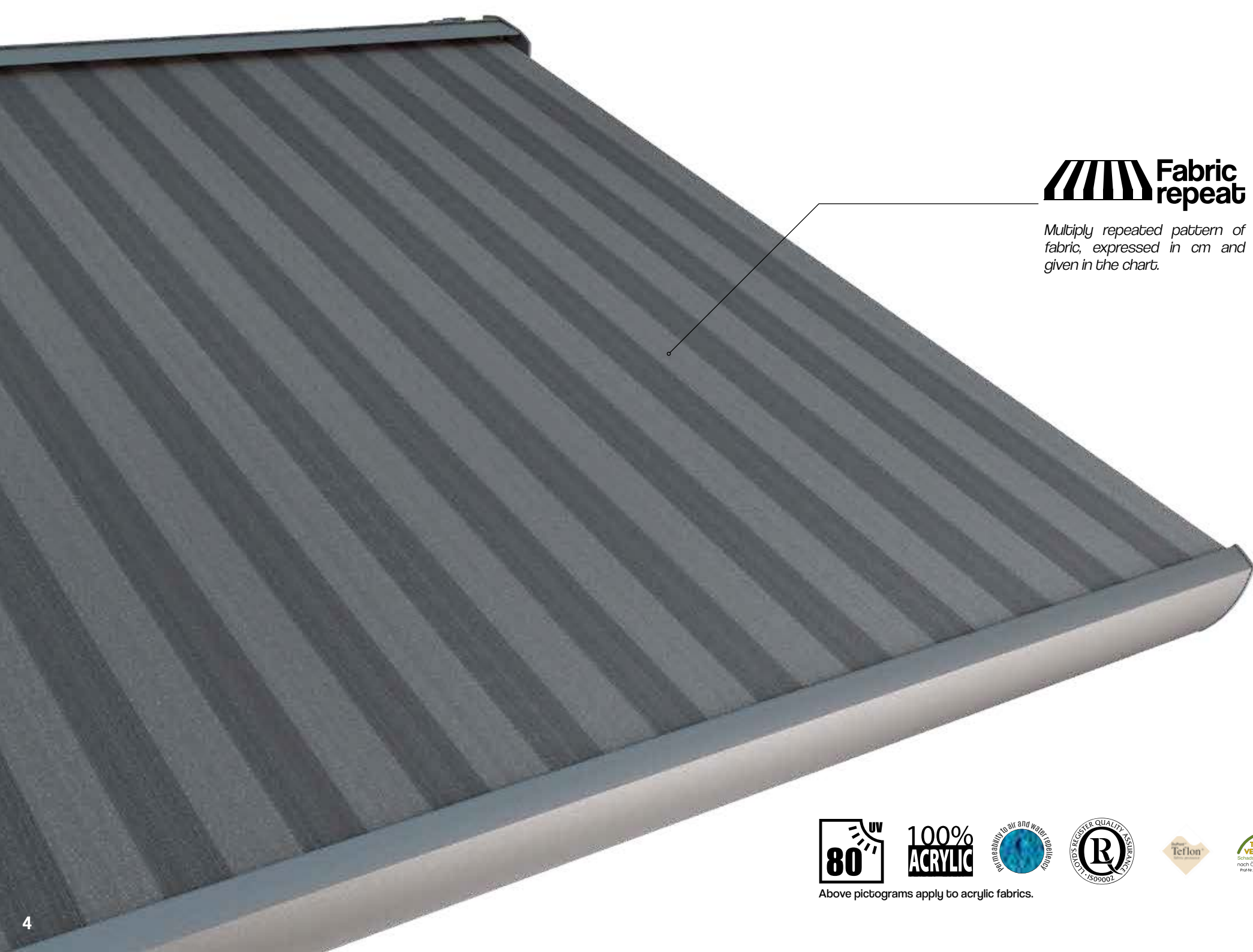
table of **contents**

awning fabrics	3
solid awning fabrics.....	6
waterproof awning fabrics.....	12
orchestra awning fabrics.....	13
urban / landscape mini awning fabrics.....	14
landscape awning fabrics.....	15
classical / fantasy awning fabrics.....	16
screen fabrics	21
pergola solid fabrics.....	29

awning

fabrics





 **Fabric repeat**

Multiply repeated pattern of fabric, expressed in cm and given in the chart.



**100%
ACRYLIC**



Above pictograms apply to acrylic fabrics.

ACRYLIC FABRICS

Technical data shown below are average values of the current production Die angegebenen technischen Daten sind Durchschnittswerte der laufenden Produktion Les données techniques ci-dessous sont des valeurs moyennes de la production courante		SOLID
Fabric Gewebe Tissu		Acrylic 100%, solution dyed Acryl 100%, spinnlösengefärbt Acrylique, 100% teint masse
Finishing Ausrüstung Traitement		Teflon - Cleangard
Weight Gewicht Poids total	DIN EN 12127	~ 300 g/m ²
Width Warenbreite Laize		120 cm
Colour fastness Farblichkeit Solidité des coloris	DIN EN ISO 105-B02	7-8 / 8
Oil repellency Ölabweisung Oleofugation	EN ISO 14419	4-5
Water repellency Wasserabweisung Résistance au mouillage superficiel	EN ISO 4920	100
Water column Wassersäule Colonne d'eau	EN 20 811	~ 330 mm
Tensile strength (daN/5 cm) Höchstzugkraft (daN/5 cm) Résistance à la rupture (daN/5 cm)	DIN EN ISO 13934-1	~ 140 / 95
Tear resistance (daN) Weft / Warp Weberreißkraft (daN) Schuss / Kette Résistance à la déchirure (daN) Trame / Chaîne	EN ISO 13973-2	23 / 4

Acrylic fabrics guarantee the highest quality of the product, providing thermal comfort and protection against UV radiation. Made 100% out of acrylic fibre, dyed in chemical solution, provide excellent protection against colour loss. UV resistance coefficient is 7-8 at 8° scale. Impregnation with use of TEFLON® or SCOTCHGARD™ agents provides an excellent protective barrier and strengthens water-repellent qualities of the fabric, also preventing dirt adhering. Resistance to leaking: 330 mm water column. The advantage of acrylic fabric is also high resistance to tensile and tear. Permeability to air and water repellency Above pictograms apply to acrylic fabrics.

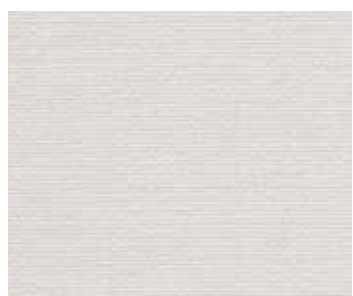


WATERPROOF FABRICS

Technical data shown below are average values of the current production Die angegebenen technischen Daten sind Durchschnittswerte der laufenden Produktion Les données techniques ci-dessous sont des valeurs moyennes de la production courante		WATERPROOF
Fabric Gewebe Tissu		Acrylic 100%, solution dyed Acryl 100%, spinnlösengefärbt Acrylique, 100% teint masse
Finishing Ausrüstung Traitement		Teflon - Cleangard
Weight Gewicht Poids total	DIN EN 12127	~ 330 g/m ²
Width Warenbreite Laize		120 cm
Colour fastness Farblichkeit Solidité des coloris	DIN EN ISO 105-B02	7-8 / 8
Oil repellency Ölabweisung Oleofugation	EN ISO 14419	4-5
Water repellency Wasserabweisung Résistance au mouillage superficiel	EN ISO 4920	100
Water column Wassersäule Colonne d'eau	EN 20 811	~ 1000 mm
Tensile strength (daN/5 cm) Höchstzugkraft (daN/5 cm) Résistance à la rupture (daN/5 cm)	DIN EN ISO 13934-1	~ 140 / 95
Tear resistance (daN) Weft / Warp Weberreißkraft (daN) Schuss / Kette Résistance à la déchirure (daN) Trame / Chaîne	EN ISO 13973-2	3 / 4

Waterproof acrylic fabrics are characterized by increased resistance to leaking - more than 800 mm water column. Weave structure together with modern impregnation technology provides high air permeability even on hot days. Oeko-Tex® guarantees that offered acrylic fabrics, subjected to special impregnation for water resistance, are not toxic.

SOLID



BLANCO



2042

UV: 97% G_{tot}: 18%

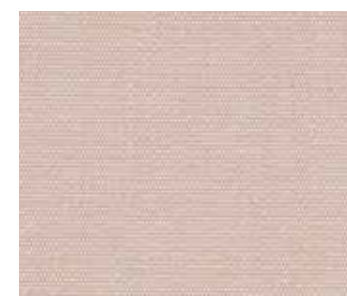


NATURAL



2929

UV: 97% G_{tot}: 18%



MARFIL



2143

UV: 97% G_{tot}: 16%



SIROCO



2226

UV: 98% G_{tot}: 12%

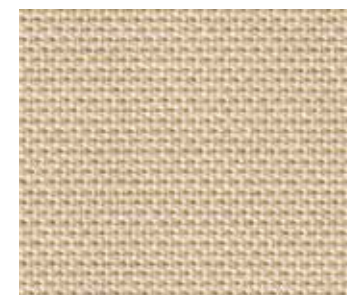


VANILLA



2687

UV: 97% G_{tot}: 17%

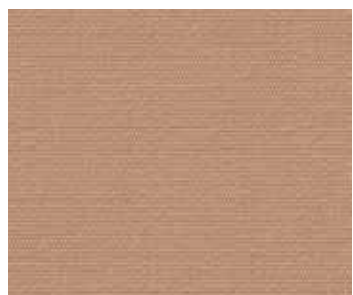


**AMBER
BEIGE**



0814

UV: 99% G_{tot}: 15.66%



BEIGE



2038

UV: 99% G_{tot}: 11%



INTEGRAL



2838

UV: 99% G_{tot}: 8%

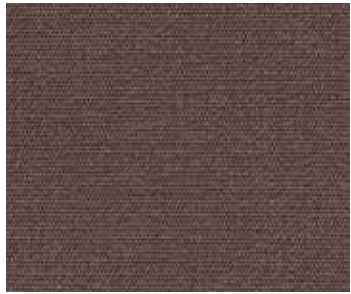


AVENA



2296

UV: 98% G_{tot}: 11%

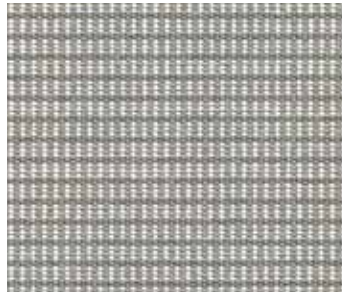


MINERAL



2831

UV: 99% G_{tot}: 7%

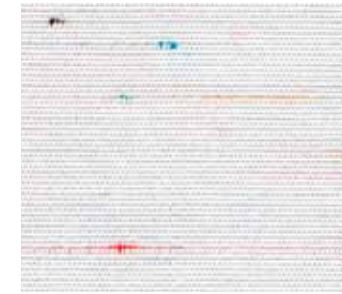


MARBLE



0923

UV: 99% G_{tot}: 12.8%



**MULTICO
FLAME**



7131

UV: 90% G_{tot}: 17%

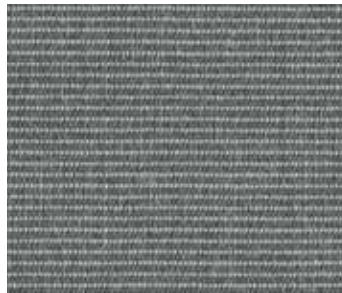


**NUAGES
FLAME**



6319

UV: 90% G_{tot}: 16%



**TWEED
ROCK**



7151

UV: 98% G_{tot}: 11%



CAFE



2316

UV: 99% G_{tot}: 5%

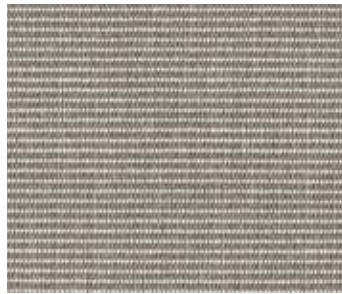


BERNA



2041

UV: 97% G_{tot}: 16%

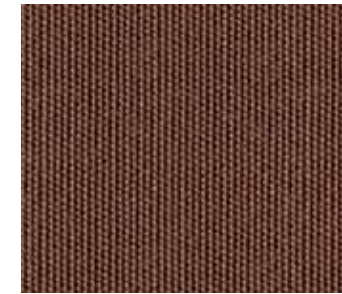


**TWEED
LATTE**



7926

UV: 98% G_{tot}: 15%

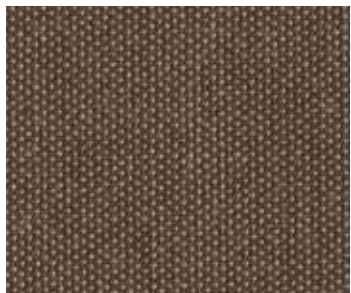


VISION



2250

UV: 99% G_{tot}: 7%

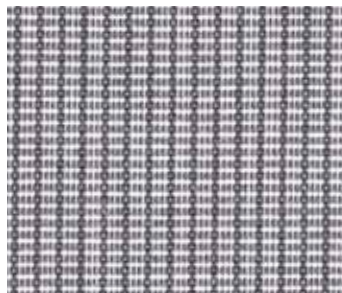


**CHAUME
FIGUE**



U235

UV: 100% G_{tot}: 9%

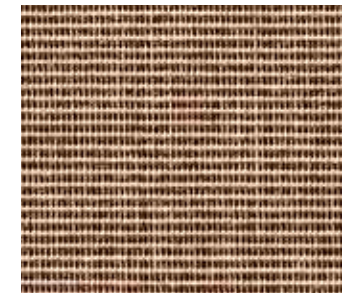


IRON



0937

UV: 99% G_{tot}: 6.57%



**TWEED
BROWN**



0403

UV: 99% G_{tot}: 6.82%

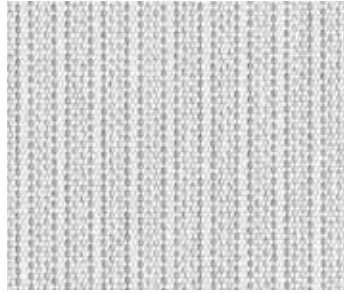


**LIN
MELANGE**



8904

UV: 95% G_{tot}: 11%



SNOWFLAKE



3463

UV: 95% G_{tot}: 22%

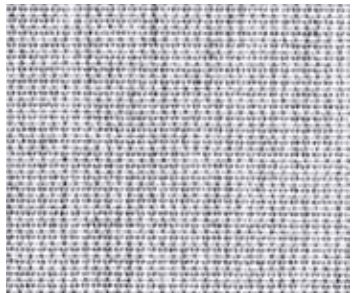


**TWEED
ARGENT**



0794

UV: 98% G_{tot}: 19%



**DARK
LINEN**



6727

UV: 98% G_{tot}: 18%



**SILVER
WHITE**



0364

UV: 99% G_{tot}: 7.67%

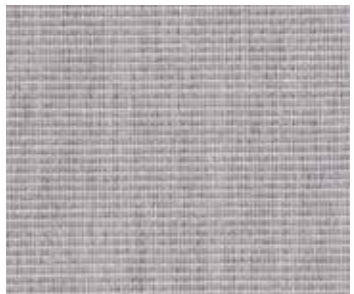


SILVER



2821

UV: 97% G_{tot}: 13%

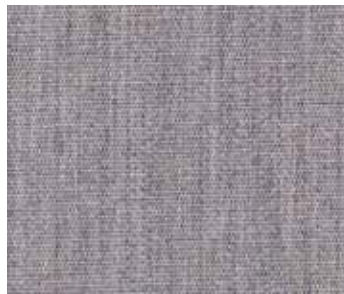


**SILVER
GREY**

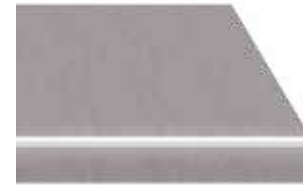


U190

UV: 90% G_{tot}: 15%



**SILVER
MELANGE**



0028

UV: 99% G_{tot}: 7.36%



**STITCH
ANDESITE**



0512

UV: 98% G_{tot}: 8%



PERLA



2979

UV: 97% G_{tot}: 8%



**PIETRA
BEIGE**



9415

UV: 98% G_{tot}: 8%

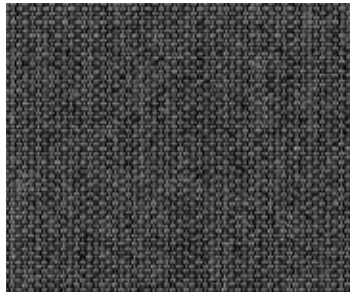


ZINC



5802

UV: 99% G_{tot}: 11%



ASH



0638

UV: 99% G_{tot}: 5.05%



ANTRACITA



8488

UV: 99% G_{tot}: 6%

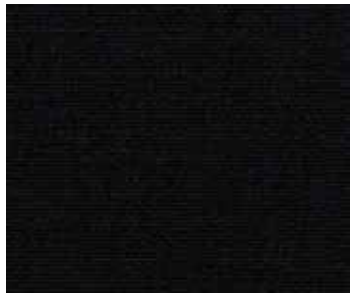


EBONY TWEED



7324

UV: 98% G_{tot}: 10%

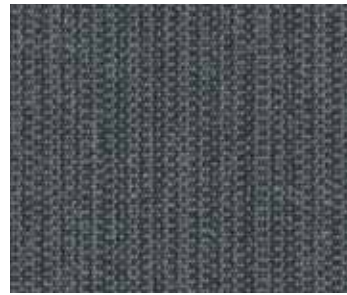


NEGRO



2170

UV: 99% G_{tot}: 5%



GRAPHITE ZIP



1524

UV: 98% G_{tot}: 12%

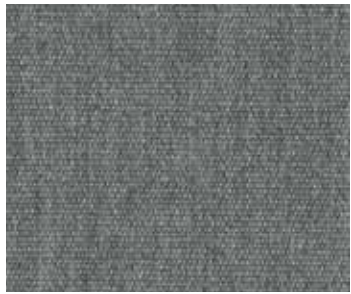


BASALT

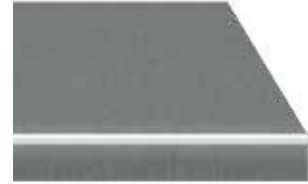


8203

UV: 100% G_{tot}: 5%

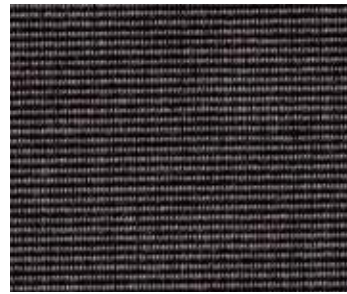


FLANELLE



U104

UV: 100% G_{tot}: 5%

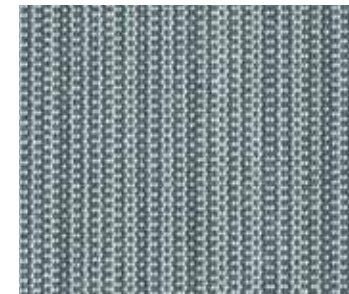


CHARCOAL TWEED



0402

UV: 99% G_{tot}: 5%



ZIP GREY



1597

UV: 98% G_{tot}: 13%

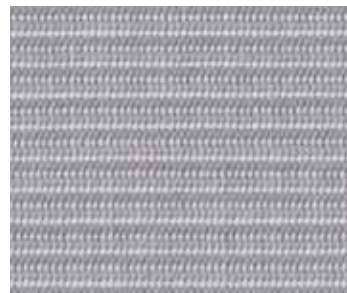


STITCH CALCITE

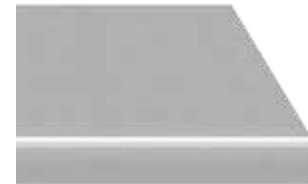


0505

UV: 98% G_{tot}: 9%

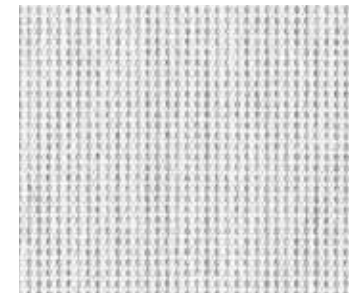


PLATINUM

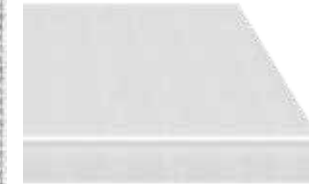


0715

UV: 90% G_{tot}: 12%

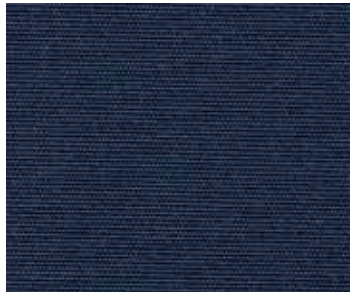


WHITE LINEN



8615

UV: 95% G_{tot}: 18%



BREEZE



2777

UV: 99% G_{tot}: 6%



AZUL



2018

UV: 99% G_{tot}: 7%



MARINE



2145

UV: 99% G_{tot}: 5%



**PIMENT
FIGUE**



U412

UV: 100% G_{tot}: 10%



**BRIGHT
RED**



2211

UV: 99% G_{tot}: 10%



RIOJA



2210

UV: 99% G_{tot}: 8%



**CARMIN
FIGUE**



U411

UV: 100% G_{tot}: 10%



**SWITCH
ROGUE**



U390

UV: 100% G_{tot}: 8%

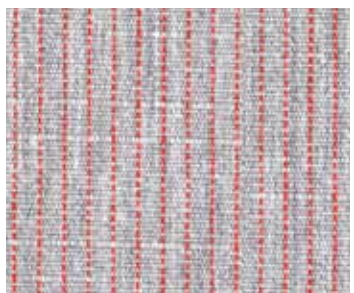


GRANATE



2101

UV: 99% G_{tot}: 6%



**STITCH
RUBY**



0507

UV: 98% G_{tot}: 9%



**MARSEILLE
FLAME**



8854

UV: 100% G_{tot}: 11%

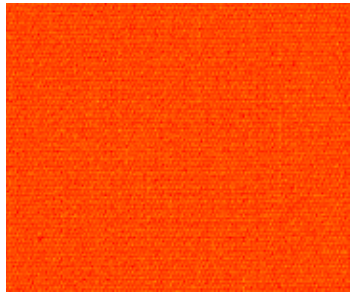


AMARILLO



2013

UV: 99% G_{tot}: 15%

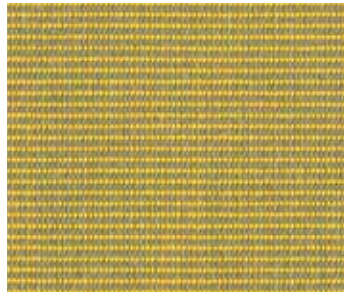


ORANGE



2050

UV: 99% G_{tot}: 13%



**TWEED
SENAPE**



0034

UV: 99% G_{tot}: 6.3%



CURRY



U105

UV: 100% G_{tot}: 12%

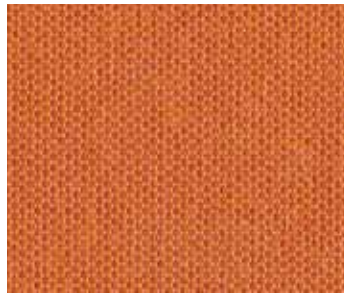


OCRE



2180

UV: 99% G_{tot}: 13%



**POTIRON
PIGUE**



U413

UV: 100% G_{tot}: 10%

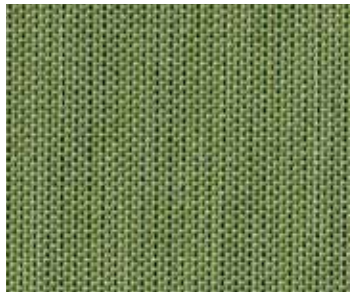


**MELEZE
PIGUE**



U417

UV: 100% G_{tot}: 8%



JADE



0396

UV: 99% G_{tot}: 8.12%



**VERDE
BOTELLA**



2245

UV: 99% G_{tot}: 6%



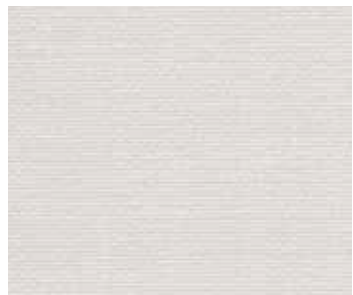
**SWITCH
EMPIRE**



U393

UV: 100% G_{tot}: 8%

WATERPROOF

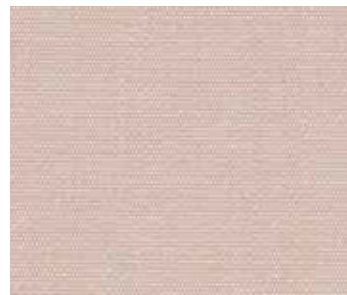


BLANCO



8268

UV: 97% G_{tot}: 18%



MARFIL



8272

UV: 97% G_{tot}: 16%



AMARILLO



8265

UV: 99% G_{tot}: 15%



COCO



2047

UV: 99% G_{tot}: 9%



GRIS



8271

UV: 99% G_{tot}: 7%



ANTRACITA



2796

UV: 99% G_{tot}: 6%



**TWEED
NEGRO**



2085

UV: 99% G_{tot}: 6%



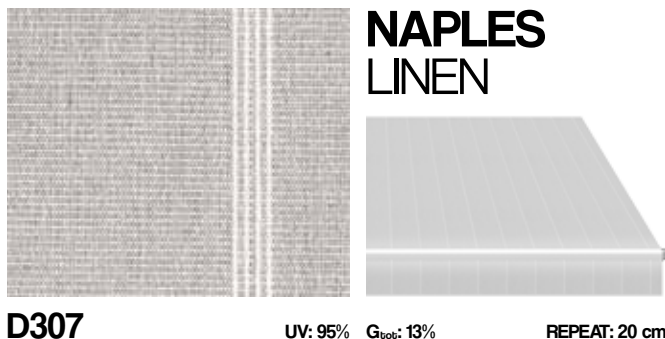
NEGRO



8275

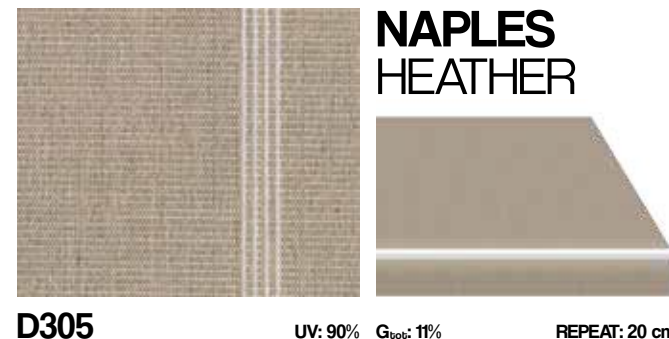
UV: 99% G_{tot}: 5%

ORCHESTRA



D307

UV: 95% G_{tot}: 13% REPEAT: 20 cm



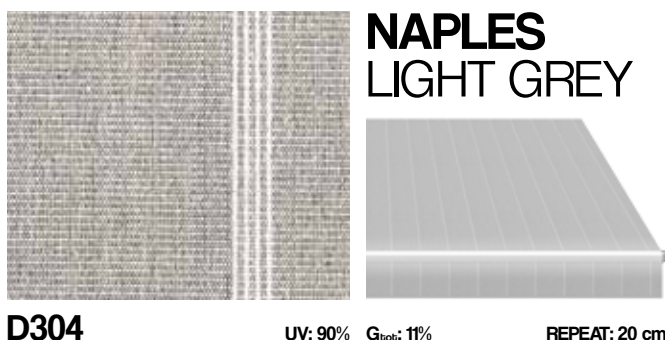
D305

UV: 90% G_{tot}: 11% REPEAT: 20 cm



D113

UV: 95% G_{tot}: 7% REPEAT: 20 cm



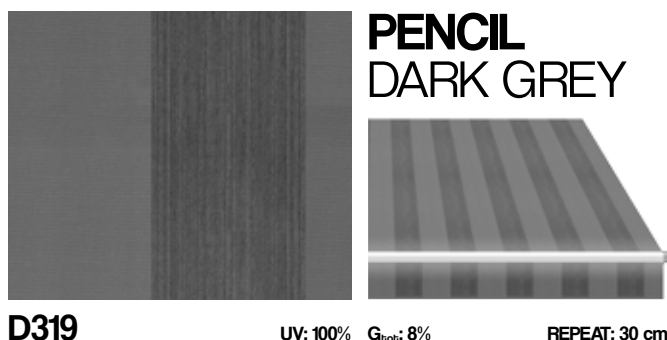
D304

UV: 90% G_{tot}: 11% REPEAT: 20 cm



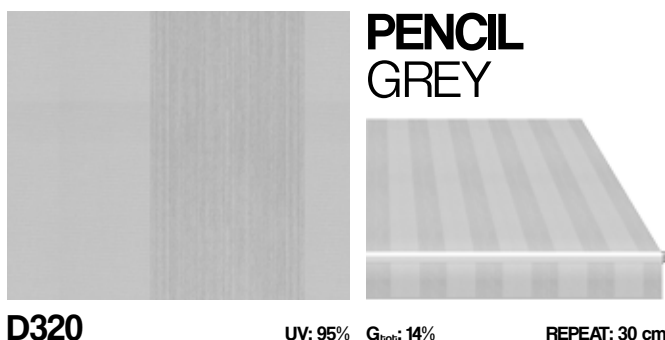
D324

UV: 95% G_{tot}: 14% REPEAT: 30 cm



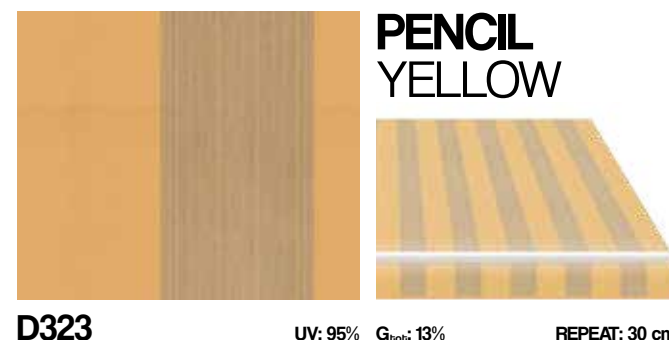
D319

UV: 100% G_{tot}: 8% REPEAT: 30 cm



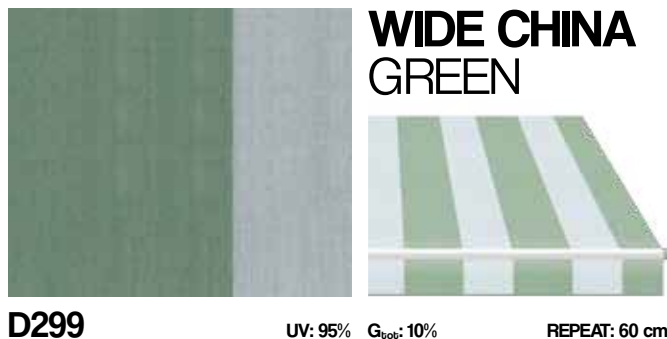
D320

UV: 95% G_{tot}: 14% REPEAT: 30 cm



D323

UV: 95% G_{tot}: 13% REPEAT: 30 cm



D299

UV: 95% G_{tot}: 10% REPEAT: 60 cm



D301

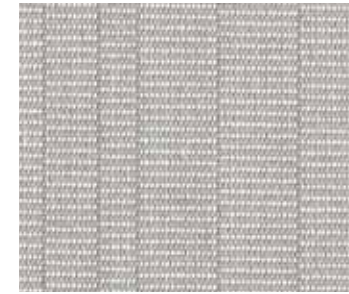
UV: 95% G_{tot}: 12% REPEAT: 60 cm



D300

UV: 95% G_{tot}: 13% REPEAT: 60 cm

URBAN

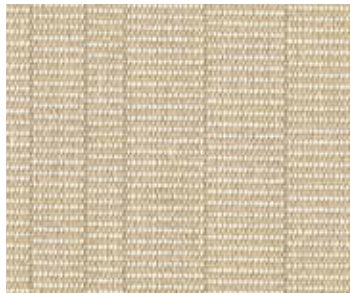


CONCRETE



0993

UV: 99% G_{tot}: 10.8% REPEAT: 6 cm

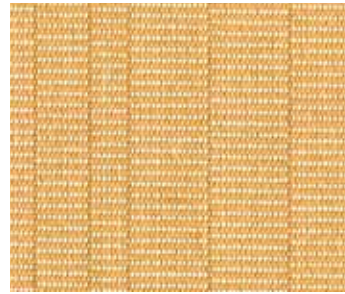


CANDLELIGHT



0990

UV: 99% G_{tot}: 14% REPEAT: 6 cm

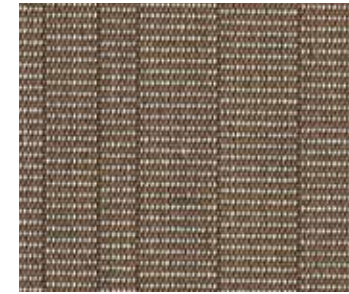


LANTERN



0991

UV: 99% G_{tot}: 14.2% REPEAT: 6 cm



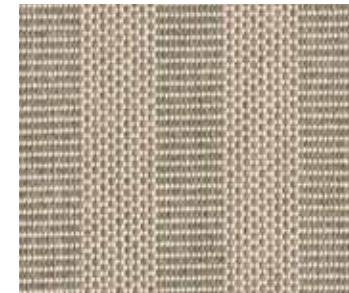
TIMBER



0992

UV: 99% G_{tot}: 9.6% REPEAT: 6 cm

LANDSCAPE MINI



SAND



4620

UV: 99% G_{tot}: 11.4% REPEAT: 2 cm

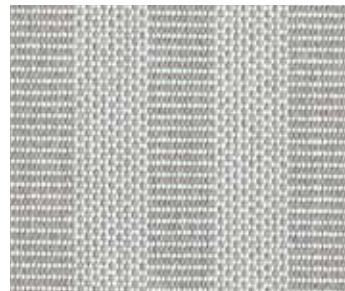


LAVA



4623

UV: 99% G_{tot}: 8.3% REPEAT: 2 cm

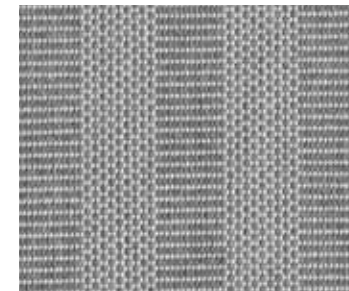


CLAY



4627

UV: 99% G_{tot}: 11.3% REPEAT: 2 cm



GRAVEL



4621

UV: 99% G_{tot}: 8.1% REPEAT: 2 cm

LANDSCAPE



BEACH



4662

UV: 99% G_{tot}: 16.37% REPEAT: 24 cm



ROSOPSIDA

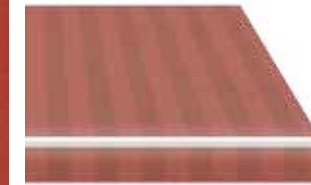


4657

UV: 99% G_{tot}: 14.96% REPEAT: 24 cm

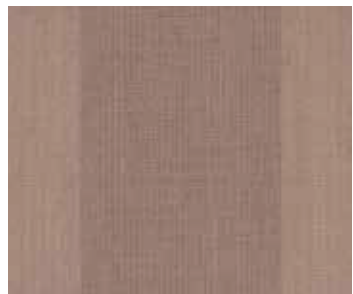


GOBI



4658

UV: 99% G_{tot}: 11.32% REPEAT: 24 cm



**SAHARA
DUST**



4639

UV: 99% G_{tot}: 10.18% REPEAT: 24 cm



NAMIB



4640

UV: 99% G_{tot}: 5.04% REPEAT: 24 cm



FJORD



4644

UV: 99% G_{tot}: 7.8% REPEAT: 24 cm



CLIFFS



4643

UV: 99% G_{tot}: 6.78% REPEAT: 24 cm



LADAKH



4655

UV: 99% G_{tot}: 5.91% REPEAT: 24 cm



VULCANO



4665

UV: 99% G_{tot}: 5% REPEAT: 24 cm

CLASSICAL



2103

UV: 97% G_{tot}: 16% REPEAT: 20 cm



0597

UV: 98% G_{tot}: 12% REPEAT: 20 cm



9878

UV: 98% G_{tot}: 15% REPEAT: 20 cm



2015

UV: 97% G_{tot}: 15% REPEAT: 20 cm



2275

UV: 98% G_{tot}: 14% REPEAT: 20 cm



2148

UV: 99% G_{tot}: 9% REPEAT: 20 cm

FANTASY



3868

UV: 95% G_{tot}: 22% REPEAT: 30 cm



6712

UV: 95% G_{tot}: 16% REPEAT: 30 cm



0180

UV: 99% G_{tot}: 14.73% REPEAT: 30 cm

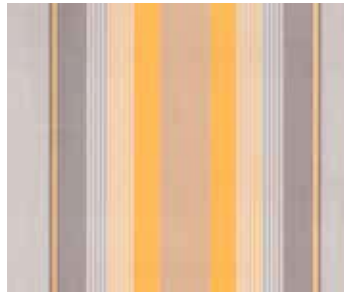


PALERMO



3605

UV: 90% G_{tot}: 21% REPEAT: 17 cm

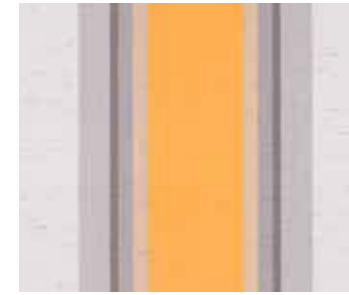


ARGENTINA



2016

UV: 98% G_{tot}: 15% REPEAT: 30 cm

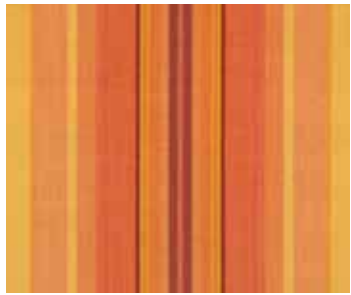


TARANTO

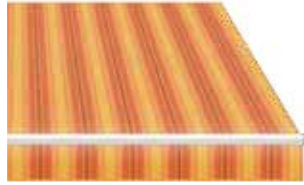


3672

UV: 95% G_{tot}: 21% REPEAT: 24 cm

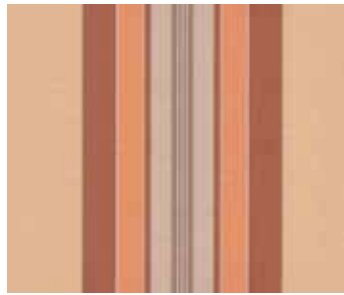


CANBERRA



0452

UV: 99% G_{tot}: 15.51% REPEAT: 24 cm

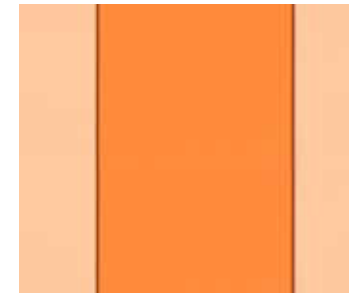


**LISBONNE
NATURE**



8224

UV: 95% G_{tot}: 13% REPEAT: 30 cm



DAKAR



2080

UV: 98% G_{tot}: 15% REPEAT: 40 cm

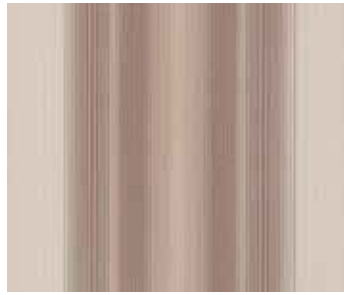


SALERNO



3861

UV: 90% G_{tot}: 20% REPEAT: 30 cm



ALBERTA



5106

UV: 98% G_{tot}: 15% REPEAT: 30 cm

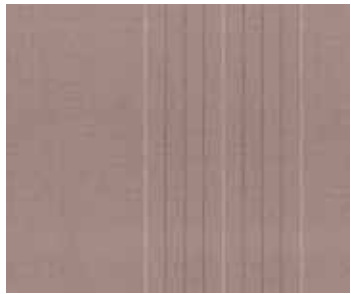


MANCHESTER



2823

UV: 98% G_{tot}: 8% REPEAT: 24 cm



SUNBURY



6106

UV: 98% G_{tot}: 10% REPEAT: 30 cm

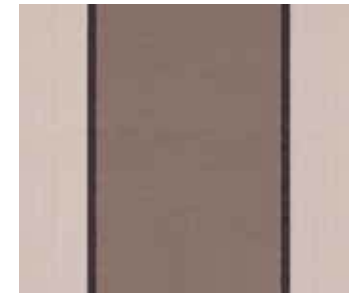


**HARDELOT
NATURE**



8935

UV: 95% G_{tot}: 14% REPEAT: 30 cm

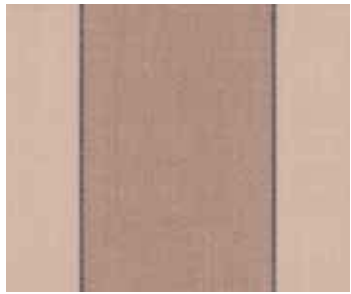


**SIENNE
NATURE**



D100

UV: 95% G_{tot}: 14% REPEAT: 30 cm

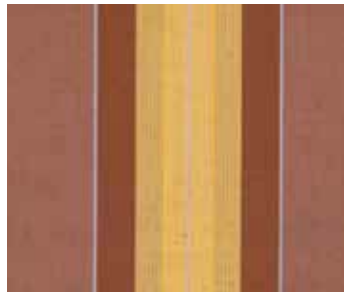


TEXAS



2238

UV: 98% G_{tot}: 13% REPEAT: 30 cm



PERU



2201

UV: 98% G_{tot}: 14% REPEAT: 30 cm



ANDRIA



3881

UV: 95% G_{tot}: 18% REPEAT: 30 cm



MARTE



2121

UV: 99% G_{tot}: 11% REPEAT: 24 cm



BOLOGNA



3427

UV: 90% G_{tot}: 22% REPEAT: 20 cm



JAMAICA



2701

UV: 98% G_{tot}: 14% REPEAT: 30 cm

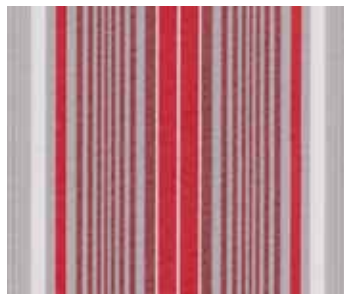


BRISBANE



0186

UV: 98.1% G_{tot}: 10.26% REPEAT: 24 cm



EDMONTON



6711

UV: 98% G_{tot}: 13% REPEAT: 30 cm

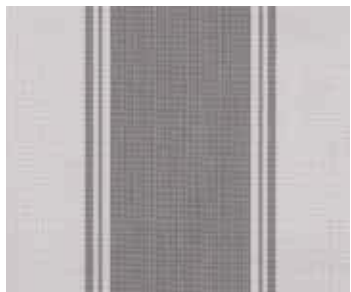


**OSLO
FIRE**



7351

UV: 95% G_{tot}: 14% REPEAT: 30 cm



WINTONE



0734

UV: 98% G_{tot}: 12.39% REPEAT: 24 cm



FOGGIA

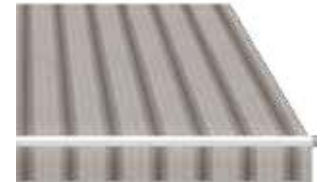


3864

UV: 95% G_{tot}: 18% REPEAT: 30 cm

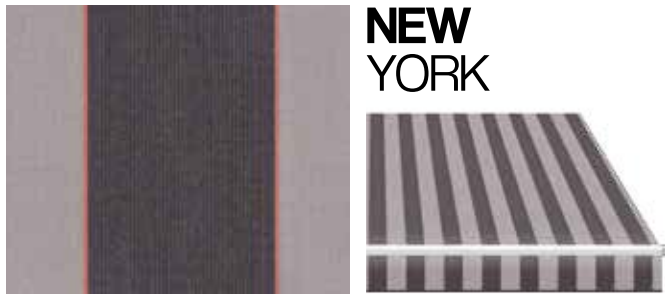


**BROKEN
HILL**



0497

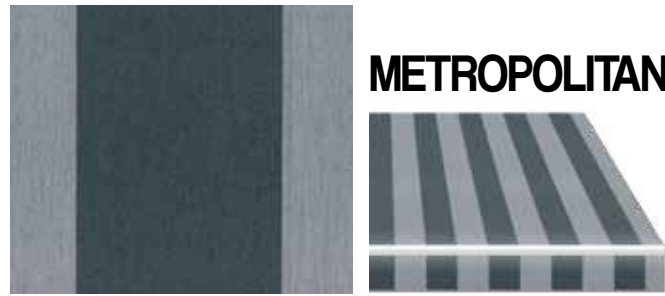
UV: 95% G_{tot}: 16% REPEAT: 30 cm



**NEW
YORK**

2174

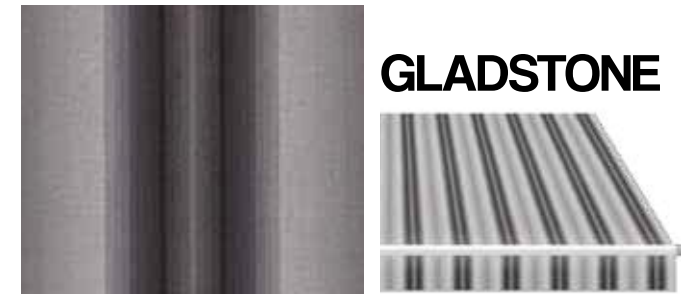
UV: 98% G_{tot}: 14% REPEAT: 30 cm



METROPOLITAN

3608

UV: 99% G_{tot}: 7% REPEAT: 30 cm



GLADSTONE

0493

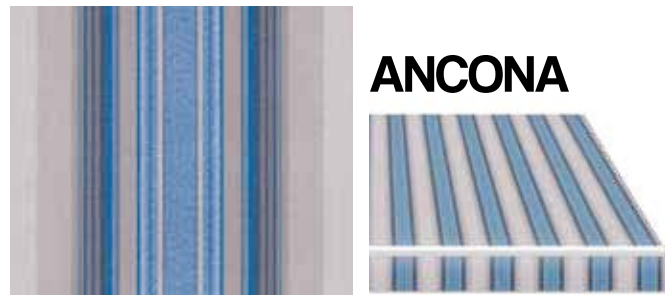
UV: 99% G_{tot}: 7.78% REPEAT: 24 cm



**SIENNE
STONE**

8931

UV: 95% G_{tot}: 13% REPEAT: 30 cm



ANCONA

3746

UV: 90% G_{tot}: 19% REPEAT: 24 cm



PADOVA

3875

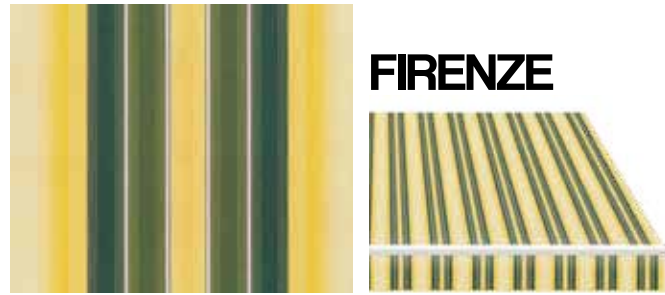
UV: 95% G_{tot}: 17% REPEAT: 30 cm



RAVENNA

3882

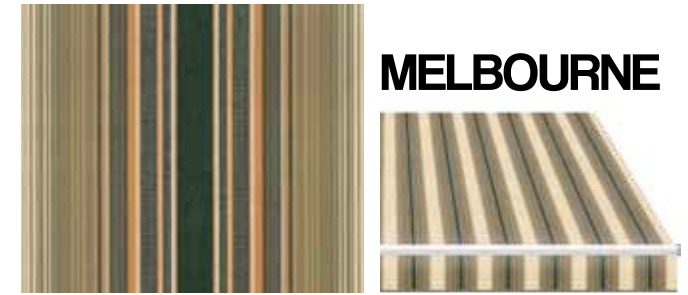
UV: 95% G_{tot}: 18% REPEAT: 30 cm



FIRENZE

3889

UV: 90% G_{tot}: 20% REPEAT: 30 cm



MELBOURNE

0054

UV: 99% G_{tot}: 11.74% REPEAT: 24 cm



ORLANDO

2191

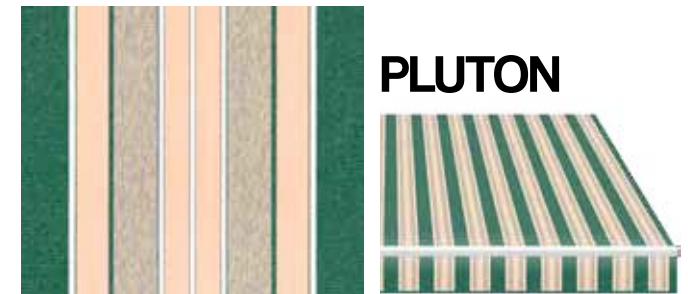
UV: 98% G_{tot}: 11% REPEAT: 30 cm



CANADA

2061

UV: 99% G_{tot}: 8% REPEAT: 30 cm



PLUTON

2179

UV: 99% G_{tot}: 10% REPEAT: 24 cm